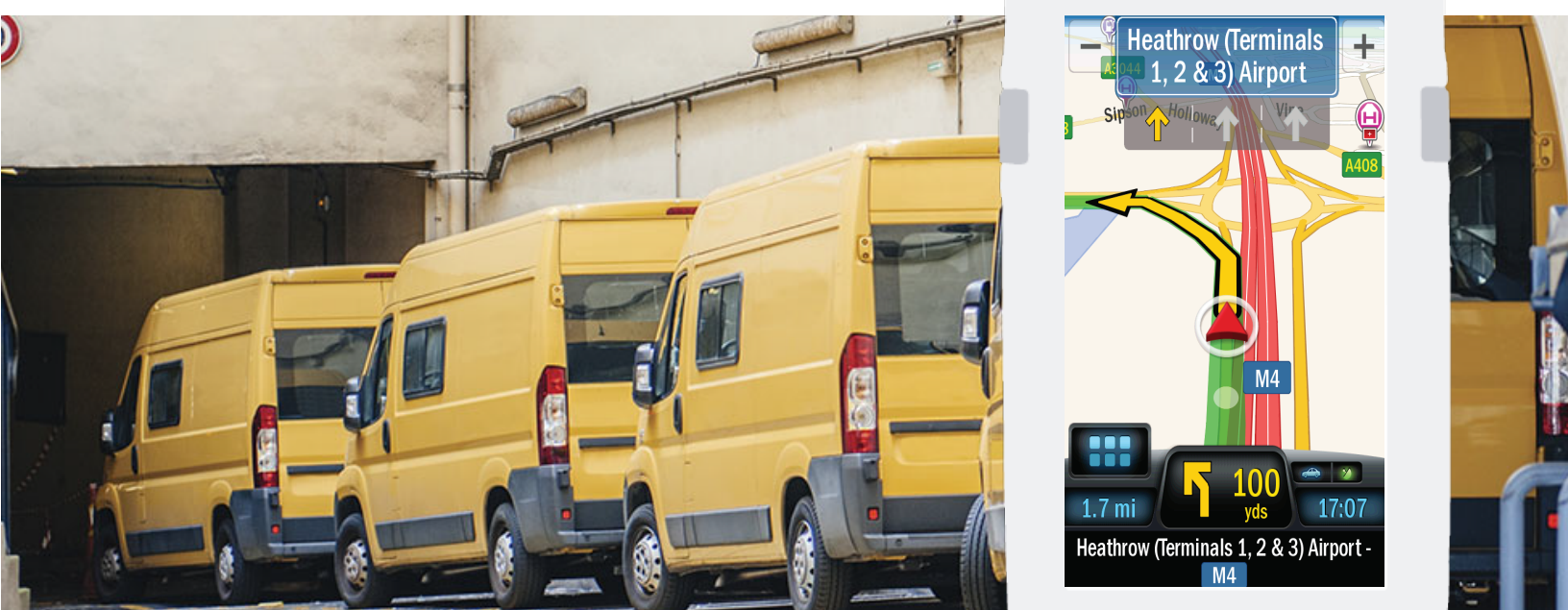


**CoPILOT<sup>®</sup>**  
PROFESSIONAL

**Honeywell**

# CoPilot Professional

Routing Optimization & Business Navigation  
for the Mobile Workforce




# CoPILOT<sup>®</sup>


## PROFESSIONAL

CoPilot Professional is a flexible software and services platform enabling enterprises to deploy integrated, commercial grade turn-by-turn GPS navigation on Honeywell Mobile Computers as part of a mobile workforce strategy.

Using the device's internal GPS chipset and storing all map data on-board, CoPilot Professional optimizes performance and reliability while removing any reliance on data downloads for navigation.

## Deep Software Integration for Custom Solutions

 With over 250 APIs and function calls, the CoPilot Professional SDK provides total control of all aspects of the navigation and is highly configurable for any large scale deployment.

 Through the CoPilot Integration Kit (CPIK) you can also seamlessly embed CoPilot within mobile business apps for Android, providing an excellent user experience that is simple and effective to deploy.

With all integrations, ALK provides highly engaged professional supporting services.

## Honeywell Mobile Computer Optimization & Compliance

### Advanced Route Optimization





By combining routing algorithms with the pre-defined Service Level Agreements (SLAs) stored in back office planning systems, CoPilot Professional's Advanced Route Optimization provides organizations the ability to produce highly accurate ETAs.

The result is enhanced company efficiency and improved customer satisfaction through the generation of smaller, customer convenient, time windows.

## RouteSync<sup>®</sup>

RouteSync provides the crucial link between the planned route in the back office and the navigated route in the vehicle. Managers can send customized routes directly to mobile workers running CoPilot Professional on their Honeywell Mobile Computer. Back office managers are provided with an automated alert if a driver goes off the planned route.

## CoPilot Professional Features Include:

-  Multi-stop trip planning and time window-based job re-sequencing
-  Offline navigation and mapping
-  Connection to live traffic services\*
-  Integration with other field service, proof-of-delivery and mobile workflow applications stored on the Honeywell Mobile Computer

## CoPILOT<sup>®</sup> TRUCK<sup>™</sup>

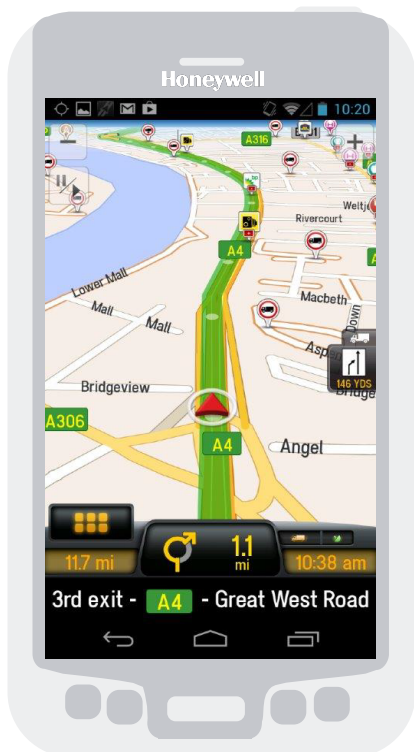
CoPilot Truck offers the same flexible software and services platform of integrated GPS navigation as CoPilot Professional, with the addition of Truck-specific attributes. It provides the optimal route for any itinerary, while automatically avoiding commercial truck restrictions and seamlessly integrating with other transportation management and mobile communications systems.

\*Requires a mobile Internet connection

## Business Benefits

### A Revolution in Transport Efficiency

- ➔ Improve overall fleet efficiency by reducing annual out-of-route mileage by 5 to 10% by deploying resources based on availability or location
- ➔ Generate time windows of one hour or less and improve first-time delivery success with highly accurate ETAs
- ➔ Improve driver performance by decreasing time to productivity for new drivers by up to 90%
- ➔ Unique syncing capabilities enables routes planned in the back office to be replicated in-vehicle
- ➔ Rely on truck-specific routing – 50% of accidents are attributed to lost drivers. CoPilot Truck generates optimal routes based on vehicle height, length, width, weight/axle, weight and load type
- ➔ Over 250 API function calls to enable seamless integration with other field service, proof-of-delivery and mobile workflow applications



## ALK and Honeywell

As an original member of the Honeywell Android Developer program and a certified partner, ALK Technologies is committed to developing and supporting the widest choice of Honeywell Mobile Computers.

### Honeywell Mobile Computer Support

# Honeywell

#### Dolphin

- ➔ 6000
- ➔ 6100
- ➔ 7600
- ➔ 7800
- ➔ CT50
- ➔ 9700
- ➔ 9900
- ➔ 99EX
- ➔ 70e Black
- ➔ 75e

#### Intermec

- ➔ CN51

### Contact Us Today:

#### EMEA and APAC

Chris Quin – Director, Business Development  
T: +44 (0) 7779 577189  
E: cquin@alk.com

Dave Morris, Business Development Manager- EMEA  
T: +44 (0) 7957 735147  
E: dmorris@alk.com

#### North America

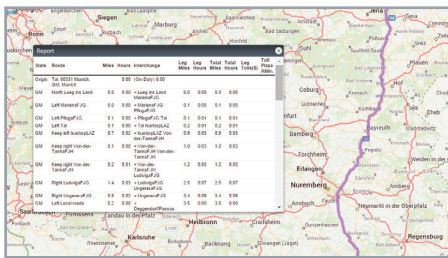
Jon Spiewak, Business Development  
Manager, Enterprise Solutions  
T: (1) 609 986 1560  
E: jspiewak@alk.com

[www.copilotpro.com](http://www.copilotpro.com)

# Consistent Route Optimization Mapping and Navigation in the Back Office and on the Device

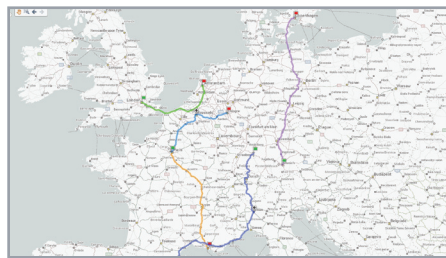
Built using the same source of commercial mapping and routing data as CoPilot Professional, ALK Maps is a dynamic asset and route visualization platform that can further enhance your mobile workflow solution.

The combination of the two solutions provides a consistent view of route optimization, mapping and navigation between the drivers' device and the back office. This added visibility of real-time, precise data allows the trip to be safely and efficiently adjusted from the back office to best suit changing conditions.



## Directions & Routing

Interactively plan simple or complex routes using a variety of parameters or route options before and during trips



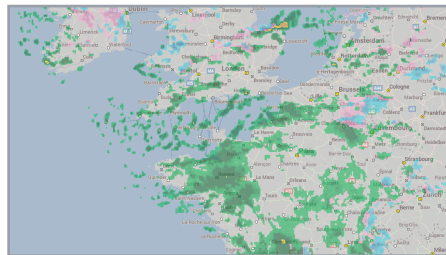
## Mobile Asset Management

Quickly track and monitor vehicles and assets in real time



## Geocoding Solutions

Plot and save custom places using latitude and longitudes for more precise routing



## Weather Display

Overlay current weather for daily trip dispatch or utilize historical data for enhanced planning

## Features

- ➔ Simple integration using a single source code
- ➔ Commercial vehicle types and routing restrictions available for continuous route optimization
- ➔ Measure driver performance and analyze routes for compliance
- ➔ Worldwide, street-level coverage
- ➔ Satellite street-view imagery