

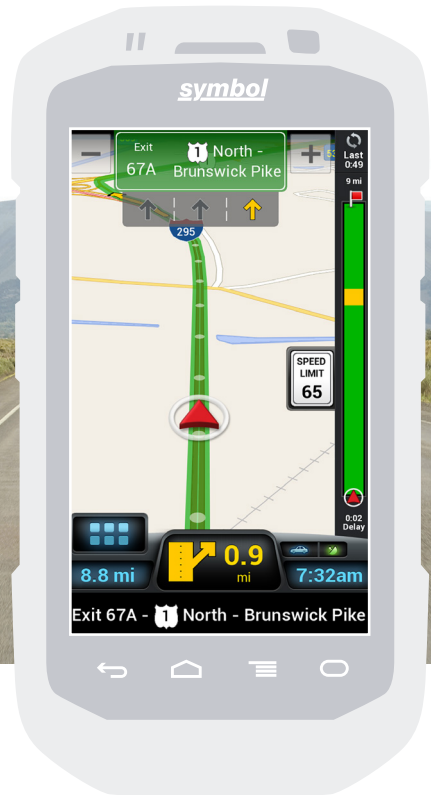


ZEBRA

COPILOT[®]
PROFESSIONAL

CoPilot Professional

Integrated Navigation & Advanced
Route Optimization for the
Mobile Workforce



With a combined customer base of over 250,000 users, Zebra Technologies and ALK work together to help enterprise level organizations improve the efficiency of their mobile workforce and deliver greater customer satisfaction.

The Benefits

- ➔ **Decreases time to productivity** for new drivers up to 90%
- ➔ **Reduces out-of-route mileage** by up to 10%
- ➔ **Integrates with leading field service** and other mobile worker applications stored on device
- ➔ **Improves customer service with accurate ETAs** and smaller, precise time windows
- ➔ **Enhances safety and compliance** with vehicle specific routing and configuration of multiple routing profiles
- ➔ **Saves time and improves accuracy** with automated address entry
- ➔ **Improves workforce efficiency** through redirection of underutilized resources
- ➔ **Familiar driver GPS navigation experience** with 2D, 3D and 'Directions only' map views



COPILOT[®] PROFESSIONAL

More Than Navigation, CoPilot is Revolutionizing
Business for the Mobile Workforce

CoPilot Professional is a software platform designed for highly customized GPS navigation and advanced route optimization. It allows enterprises to deploy integrated commercial grade, turn-by-turn navigation on Zebra Technologies mobile computers as part of an overall mobile workforce strategy.

Using the device's internal GPS Chipset and storing all map data offline, CoPilot Professional optimizes performance and reliability while removing any reliance on navigation data downloads.

Deep Software Integration for Custom Solutions

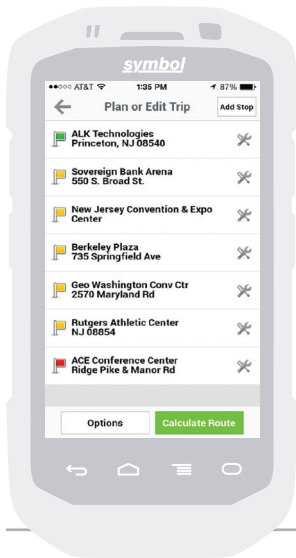


With over 250 APIs and function calls, the CoPilot Professional SDK provides total control of the navigation and is highly configurable for any large scale deployment on Zebra Technologies Windows-based mobile computers.



Utilizing the CoPilot Integration Kit (CPIK) software vendors can also seamlessly embed CoPilot Professional within mobile business apps for Android, providing an excellent user experience that is simple and effective to deploy.

With all integrations, ALK provides highly engaged professional supporting services.



Advanced Route Optimization & Precise Time Windows

Working in conjunction with ALK, Zebra Technologies can now provide their Enterprise customers with the facility to create and communicate precise time windows.

Advanced Route Optimization provides the ability to accurately schedule a mobile worker to arrive at a location within a specific time frame. By combining CoPilot's powerful routing algorithms and pre-defined time related Service Level Agreements from back office planning systems, optimization of up to 300 stops takes place on the mobile worker's Zebra Technologies mobile computer.

The output is highly accurate ETAs of one hour or less, which is passed on to the end customer.

The result is enhanced company efficiency, improved first time visit success and improved customer satisfaction.

COPILOT[®] TRUCK[™]

Trusted by Over 300,000 Truck Drivers Daily
to Keep Them Safe, Compliant and Efficient

CoPilot Truck is a feature rich, cost-effective solution that provides fleets with safe, efficient industry standard PC*MILER routing.

The Benefits

- ➔ **Routing based on vehicle parameters** and load type including Hazmat categories
- ➔ **Detour function** quickly identifies an alternate truck legal route
- ➔ **Practical and shortest routing** options available
- ➔ **Light and Medium Duty** option provides a simplified set up for vehicles up to 8 tons (7.5 tonnes) in Weight and 32 Feet (10 meters) in Length





Consistent Route Optimization, Mapping, and Navigation in the Back Office and on the Device

Built using the same source of commercial mapping and routing data as CoPilot Professional, ALK Maps is a dynamic asset and route visualization platform that can further enhance your mobile workflow solution.

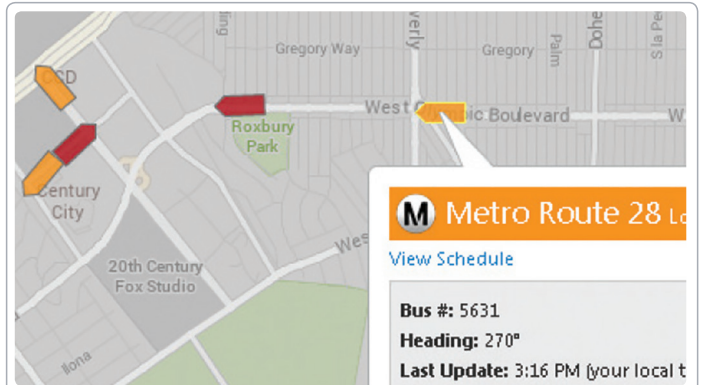
The combination of the two solutions provides a consistent view of route optimization, mapping and navigation between the driver's device and the back office. This added visibility of real-time, precise data allows the trip to be safely and efficiently adjusted from the back office to best suit changing conditions.

ALK Maps Provides:

State	Route	Miles	Hours	Interchange	Leg Miles	Leg Hours	Total Miles	Total Hours	Leg Miles	Total Miles	Leg Hours	Total Hours	Time	Area
GM	Tal 80331 Munich	0.00	0:00	(On-Duty) 0:00										
GM	North Lucy Ins Land	0.00	0:00	Luop au Land	0.00	0:00	0.00	0.00	0.00	0.00	0.00	0.00		
GM	Left Marensf JG	0.00	0:00	Marensf JG	0.00	0:00	0.00	0.00	0.00	0.00	0.00	0.00		
GM	Left Phugf JG	0.10	0:01	Phugf JG	0.10	0:01	0.10	0.01	0.10	0.01	0.01	0.01		
GM	Left Tal	0.10	0:01	Tal	0.10	0:01	0.20	0:01	0.20	0:01	0.01	0.01		
GM	Keep left barstorf LAZ	0.70	0:02	barstorf LAZ	0.70	0:03	0.90	0:03	0.90	0:03	0.03	0.03		
GM	Keep right Von-de-Tanf JH	0.10	0:01	Von-de-Tanf JH	0.10	0:01	1.00	0:03	1.00	0:03	0.03	0.03		
GM	Keep right Von-de-Tanf JH	0.20	0:01	Von-de-Tanf JH	0.20	0:01	1.20	0:05	1.20	0:05	0.05	0.05		
GM	Right Ludwigsf JG	1.40	0:03	Ludwigsf JG	1.40	0:03	2.50	0:07	2.50	0:07	0.07	0.07		
GM	Right Ungersf JG	0.80	0:02	Ungersf JG	0.80	0:02	3.40	0:09	3.40	0:09	0.09	0.09		
GM	Left Local roads	0.20	0:01	Local roads	0.20	0:01	3.50	0:09	3.50	0:09	0.09	0.09		

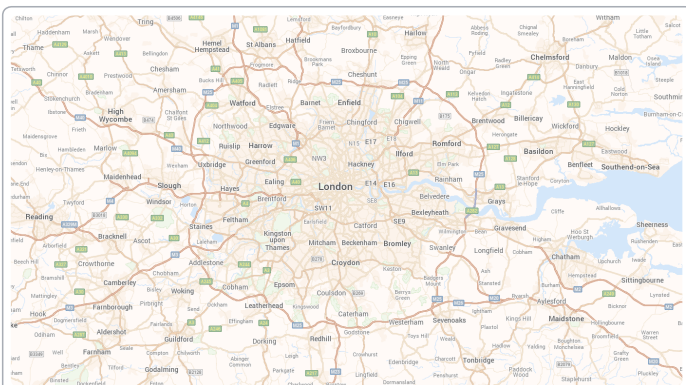
Directions & Routing

Interactively plan simple or complex routes using a variety of parameters or route options before and during trips.



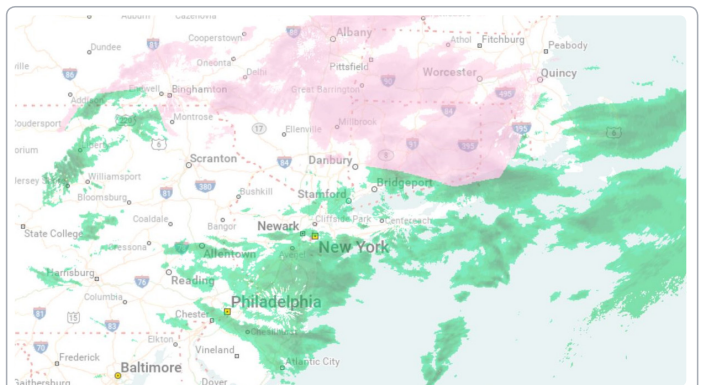
Mobile Asset Management

Quickly track and monitor vehicles and assets in real time.



Geocoding Solutions

Plot and save custom places using latitude and longitudes for more precise routing.



Traffic & Weather Display

Overlay current traffic and weather for daily trip dispatch or utilize historical traffic data for enhanced pre-planning.





ALK Technologies and Zebra Technologies

For over a decade, Zebra Technologies and ALK have established a trusted sales and technical partnership, working on joint implementations across vertical sectors as diverse as



Field Services



Utilities



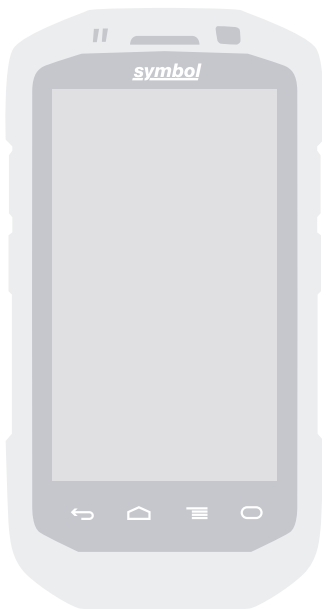
Transportation & Logistics



Emergency Services

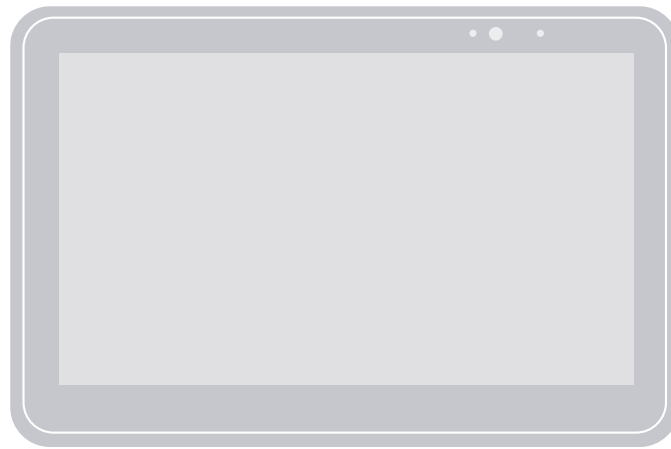
The result is a combined installed base of over 250,000 users globally.

Mobile Computer Validation and Compatibility



→ TC75

- ET1
- TC55
- MC67



→ ET55

NORTH AMERICA

Jon Spiewak
 Business Development Manager
 Enterprise Solutions
 T: (1) 609 986 1560
 E: jspiewak@alk.com

EMEA and APAC

Chris Quin
 Director, Business Development
 T: +44 (0) 7779 577189
 E: cquin@alk.com

EMEA

Dao Nguyen
 Business Development Manager
 EMEA
 T: +33 6 07 35 52 40
 E: dnguyen@alk.com

