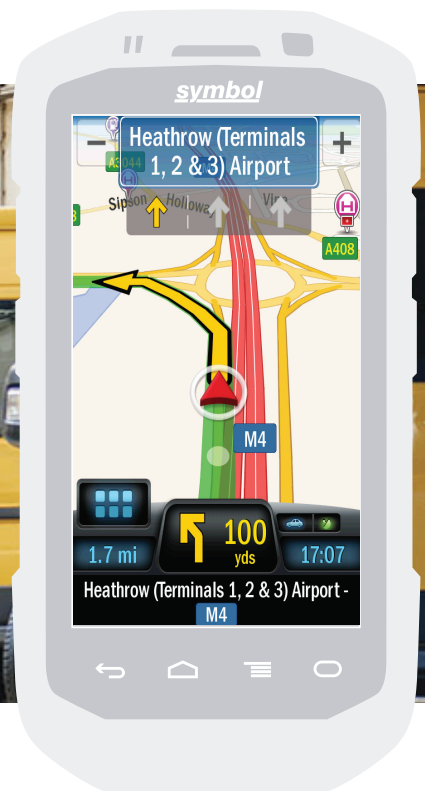


**COPILOT**<sup>®</sup>  
PROFESSIONAL



# CoPilot Professional

Integrated Navigation & Route Optimization  
for the Mobile Workforce



CoPilot Professional is a flexible software and services platform enabling enterprises to deploy integrated, commercial grade turn-by-turn GPS navigation on Zebra Technologies mobile computers as part of a mobile workforce strategy.

Using the device's internal GPS chipset and storing all map data offline, CoPilot Professional optimizes performance and reliability while removing any reliance on data downloads for navigation.

## Deep Software Integration for Custom Solutions



With over 250 APIs and function calls, the CoPilot Professional SDK provides total control of all aspects of the navigation and is highly configurable for any large scale deployment.



Through the CoPilot Integration Kit (CPIK) you can also seamlessly embed CoPilot within mobile business apps for Android, providing an excellent user experience that is simple and effective to deploy.

With all integrations, ALK provides highly engaged professional supporting services.

## Advanced Route Optimization & Precise Time Windows

Advanced Route Optimization provides the ability to accurately schedule a mobile worker to arrive at a location within a precise time window. Through the combination of CoPilot's routing algorithms with pre-defined Service Level Agreements (SLAs) from back office planning systems, CoPilot provides highly accurate ETAs.

The result is enhanced company efficiency, improved first time delivery/visit success and improved customer satisfaction.



RouteSync provides the crucial link between the planned route in the back office and the navigated route in the vehicle. Managers can send customized routes directly to mobile workers running CoPilot Professional on their Zebra Technologies mobile computer. Back office managers are provided with an automated alert if a driver goes off the planned route.

## CoPILOT<sup>®</sup> TRUCK<sup>™</sup>

CoPilot Truck offers the same flexible software and services platform of integrated GPS navigation as CoPilot Professional, with the addition of truck-specific attributes. It provides the optimal route for any itinerary, while automatically avoiding commercial truck restrictions and seamlessly integrating with other transportation management and mobile communications systems.



\*Requires a mobile Internet connection

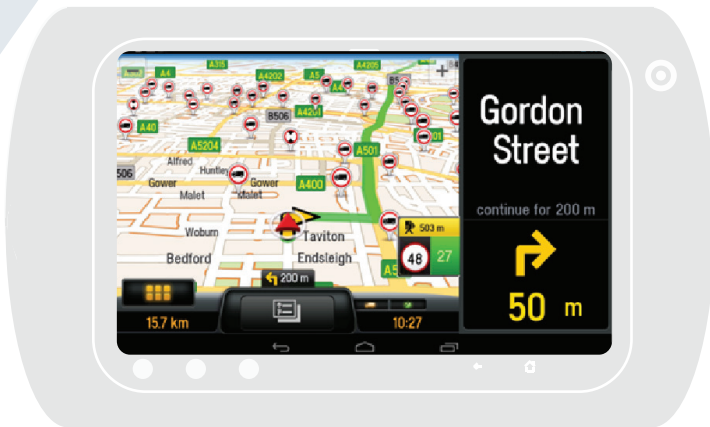
## ALK Technologies and Zebra Technologies



ALK's CoPilot Professional GPS navigation software is installed on over 250,000 Zebra Technologies mobile computers globally.

### Mobile Computer Validation and Compatibility

- ET1
- MC67
- TC55
- TC75



### CoPilot Professional Features Include:

- Multi-stop trip planning and time window-based job re-sequencing
- Offline navigation and mapping
- Connection to live traffic services\*
- Integration with other field service, proof-of-delivery and mobile workflow applications stored on the Zebra Technologies mobile computer

## Integrated Navigation – The Benefits

- **Reduces out-of-route mileage** by approximately 5-10% annually (on average)
- **Automates scheduling and navigation** and ensures accuracy while saving tens of seconds per entry on a repetitive business task
- **Improves customer service with accurate ETAs** and smaller, precise time windows
- **Improves workforce efficiency** through redirection of underutilized resources
- **Enhances safety compliance** with routing based on vehicle type

## Contact Us Today:

### North America

Jon Spiewak  
Business Development Manager  
Enterprise Solutions  
T: (1) 609 986 1560  
E: jspiewak@alk.com

### EMEA and APAC

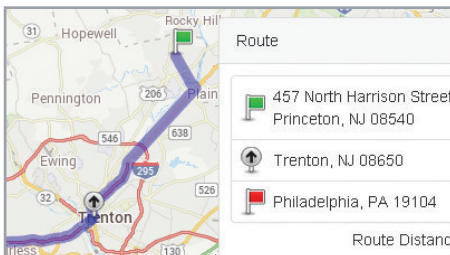
Christopher Quin  
Business Development Director  
T: +44 (0) 7779 577189  
E: cquin@alk.com

Dave Morris  
Business Development Manager  
Enterprise Solutions  
T: +44 (0) 7957 735147  
E: dmorris@alk.com

# Consistent Route Optimization, Mapping, and Navigation in the Back Office and on the Device

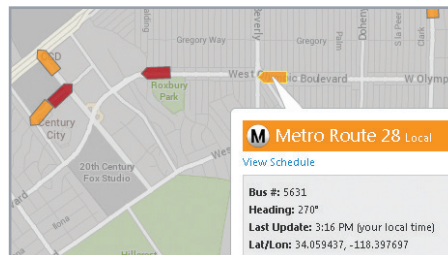
Built using the same source of commercial mapping and routing data as CoPilot Professional, ALK Maps is a dynamic asset and route visualization platform that can further enhance your mobile workflow solution.

The combination of the two solutions provides a consistent view of route optimization, mapping and navigation between the driver's device and the back office. This added visibility of real-time, precise data allows the trip to be safely and efficiently adjusted from the back office to best suit changing conditions.



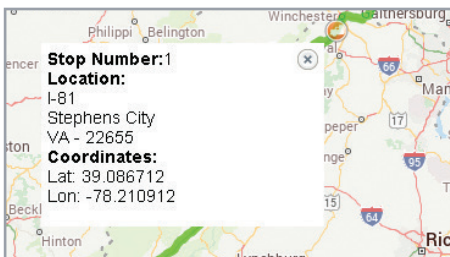
## Directions & Routing

Interactively plan simple or complex routes using a variety of parameters or route options before and during trips



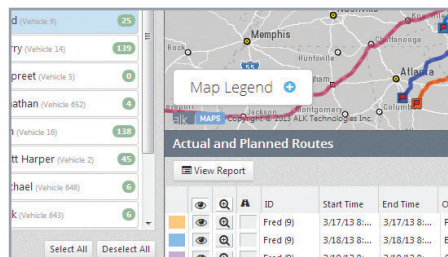
## Mobile Asset Management

Quickly track and monitor vehicles and assets in real-time



## Geocoding Solutions

Plot and save custom places using latitude and longitudes for more precise routing



## Traffic & Weather Display

Overlay current traffic and weather for daily trip dispatch or utilize historical traffic data for enhanced planning

## Features

- ➔ Simple integration using a single source code
- ➔ Commercial vehicle types and routing restrictions available for continuous route optimization
- ➔ Measure driver performance and analyze routes for compliance
- ➔ Worldwide, street-level coverage
- ➔ Satellite street-view imagery