

▶ RouteSync — PC*MILER Routes Synced with CoPilot Truck Navigation

RouteSync provides the transportation and logistics industry the crucial link between the planned route in the back office and the navigated route in the cab—delivering the guidance to drive the miles that are being billed. With RouteSync, dispatchers can send PC*MILER optimized routes directly to drivers running CoPilot Truck on an on-board device, smartphone or tablet.

An ideal fit for motor carriers, private fleets and owner operators who need to maintain in-vehicle navigation consistency with PC*MILER back office operations and accounting functions, RouteSync is the only capability of its kind.

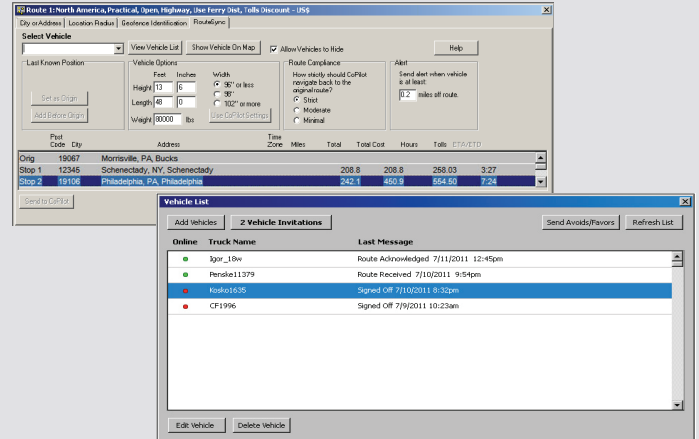
BENEFITS

- ▶ **Maintain route compliance** by sending planned routes from the back office directly to the cab
- ▶ **Ensure operational consistency** between navigation and driver pay, rating, billing, costing, load planning and fuel tax reporting
- ▶ **Reduce non-revenue mileage** by minimizing the mileage variance between actual and planned routes
- ▶ **Improve load profitability** by minimizing operational costs and maximizing margins
- ▶ **Increase driver satisfaction** by providing safe and reliable guidance throughout the planned route

► Synchronization From the Back Office to the Cab: The RouteSync Process



- Dispatchers send optimized routes, including stops, avoid/favors and lat/longs, “over-the-air” directly to CoPilot Truck
- Dispatchers can define stop order, trip options (Practical, Hazmat, Toll Discouraged, etc.), custom routing preferences (avoid/favors), and vehicle dimensions (Height, Weight, 53’ Trailer, etc.)
- Dispatchers select level of strictness that CoPilot Truck uses to navigate driver back to the planned PC*MILER route



COPILOT® TRUCK™

- Driver receives and follows the route from PC*MILER including stop order, trip options and avoid/favors
- When off-route, the driver is guided with turn-by-turn directions back on-route
- Real-time, Out-of-Route (OoR) alerts, including “off-route” and “back-on-route” are reported via email to dispatchers or fleet managers
- OoR is mileage reported via email immediately after each trip

