

CoPilot Live Professional

Integrated Navigation for the Mobile Workforce



Integrated Navigation for the Mobile Workforce

Built on a flexible software and services platform, CoPilot Live Professional enables enterprises to deploy integrated, commercial grade turn-by-turn navigation as part of their mobile workforce strategy.

With CoPilot Live Professional, drivers receive a familiar GPS navigation experience while linking directly with back office functions to significantly improve mobile worker productivity.



Improving Mobile Workforce Efficiency

Connecting to leading back office job management, tracking and planning tools, CoPilot Live Professional provides a cost effective method for remotely monitoring and influencing field resources.

Advantages Include:

- ▶ Automation of appointment address entry to eliminate manual error
- ▶ Ability to download and optimize appointment stops
- ▶ Enables monitoring of current driver location, next appointment and ETA OnDemand
- ▶ Enhanced guidance with speed limit warnings, lane indicator arrows and real exit sign info
- ▶ Provides a wide range of audio and visual driving safety alerts

The Business Benefits

- ▶ Reduces out-of-route mileage by approximately 5-10% annually (on average)
- ▶ Improves customer service with accurate ETAs and smaller, precise time windows
- ▶ Deploy/redeploy resources based on availability or location
- ▶ Improves safety compliance by eliminating the dangerous use of paper maps while driving and routing based on vehicle type
- ▶ Increases time to productivity for new or temporary drivers
- ▶ Improves workforce efficiency by utilizing an existing corporate IT/mobile device infrastructure device infrastructure

Industry Expertise

With our focus on continuous innovation, CoPilot Live Professional has become the recognized navigation solution recommended by leading global ISVs, systems integrators and hardware manufacturers.

While satisfying cross industry requirements for navigation, ALK Technologies and our partners have built a significant presence in key industry verticals:



Transportation and Logistics

CoPilot Live Professional is a scalable solution for fleets demanding safe, predictable routing based on vehicle size and load type.



Delivery

CoPilot Live Professional's routing optimization technology is helping a major delivery company maintain its one hour delivery time window.



Utilities

Providing navigation for domestic servicing and remote field maintenance operatives, CoPilot Live Professional provides guidance to Utilities suppliers in the Electric, Gas and Water industries.

The CoPilot Live Professional SDK

A comprehensive Software Developer Kit, with over 250 APIs, 'fast track' development tools and backed by a dedicated Professional Services team enables seamless integration between navigation and other field service, proof-of-delivery and mobile workflow applications on the device.

CoPilot Live Professional features capabilities to implement specific, corporate policies on the screen display, audio instructions and level of driver interaction with the software.



Reliable, On-Board Navigation

Unlike other navigation applications, CoPilot Live Professional stores all map data in internal memory on-board the mobile device, using its processor and GPS chipset for optimal route calculation and navigation with no reliance on continuous off-board mobile data downloads.

Core Navigation Features:

- ▶ Clear 2D, 3D and Directions Only map guidance views
- ▶ Voice guided, turn-by-turn directions with Text-to-Speech pronunciation
- ▶ Road lane assistance and real exit sign info
- ▶ Multi-stop trip planning and time window-based job re-sequencing
- ▶ Choice of up to 3 alternate routes
- ▶ Ability to drag the route for complete customization
- ▶ Truck-specific routing available
- ▶ Live Search for local businesses and services*
- ▶ ActiveTraffic™ - provides the fastest route based on real-time traffic speeds*

* Requires a mobile Internet connection. ActiveTraffic™ is a subscription-based service.

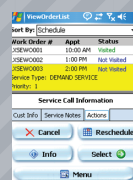
From Enterprise to Device: The SDK process



Corporate
Back-Office System



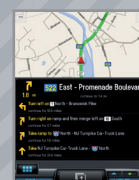
Mobile Network



Enterprise
Application



Mobile Device



COPILOT LIVE
Professional
Application



Back Office Compliance

RouteSync provides the crucial link between the planned route in the back office and the navigated route in the cab—delivering the guidance to drive the miles that are being billed.

With RouteSync, dispatchers can send a customized route directly to the driver running CoPilot Live Professional on a mobile device in the vehicle.

When a driver goes off-route, detailed turn-by-turn directions are provided to guide them back on-route. Real-time out-of-route alerts are reported via email to dispatchers or fleet managers.

Truck-Specific Routing

COPILOT[®]TRUCK[™] provides navigation based on vehicle height, length, width, axle, weight and load type. With the ability to store multiple profiles on device, it is suited to fleets with a variety of different vehicle sizes.

Geographic Coverage

CoPilot Live Professional is available in 27 languages and covers Europe, North America, the Middle East, South Africa, Australia and New Zealand.

Platform and Hardware Support

CoPilot Live Professional is compatible with strategies focused on rugged/tablet devices and terminals from leading manufacturers.

Compatible with Microsoft Windows Mobile, Windows Phone 8, Windows CE, Windows XP, Windows 7, Windows 8, Android and iOS.

For further information contact: busdev@alk.com or visit: copilotlive.com/pro

About ALK Technologies

ALK Technologies, a global leader in GeoLogistics[™] and navigation software, is focused on developing innovative solutions for transportation, logistics and mobile workforces.

For over 30 years, ALK has led the transportation industry with high-quality routing, mileage and mapping solutions.

ALK Product Portfolio

ALK Maps

The transportation industry's source for interactive routing and visualizations.

CoPilot Live Professional

Fully integrated navigation software with detailed audio and visual instructions.

CoPilot Truck

Fully integrated navigation software enhanced with industry standard routing and truck-specific attributes.

PC*MILER

PC*MILER is the transportation and logistics industry standard for routing, mileage and mapping.