

FOR K-12

Safe and Reliable Navigation: Vehicle-specific Routing for Student Transportation

CoPilot Professional provides intuitive, customizable vehicle-specific navigation allowing drivers to get up and running quicker with less training time needed. With accurate real-time ETAs based on current traffic conditions, parents and dispatchers can easily monitor when buses will actually arrive.

The Benefits

- Provide drivers accurate guidance that can take into account road restrictions based on vehicle dimensions
- Improve driver adoption and overall safety with a familiar, driver-friendly interface designed to reduce distraction, allowing the driver to simply focus on the road
- With all maps being stored on board the device, the driver can safely and quickly re-route if needed
- Directly integrates with fleet management solutions to provide dynamic ETAs to parents, schools or driver managers

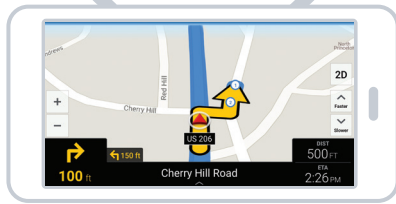
School bus driver
departs depot



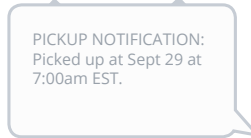
School bus driver picks up
student at bus stop



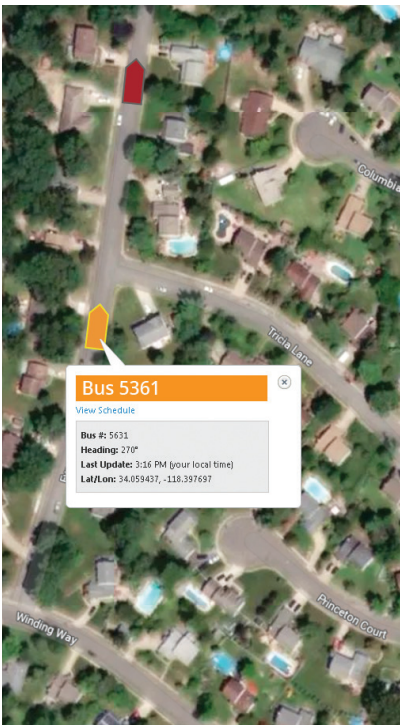
School bus arrives
at school on time



Copilot Professional adheres to the planned
route, as well as recalculation



Inform parents
& dispatchers of
real time ETAs



Visualize Your Assets based on Real-Time Conditions and ETAs

- Provides the same source of vehicle-specific mapping and data
- Reporting and route visualization across the entire fleet
- Drill down to a single school bus for detailed route compliance analysis
- Track vehicle locations in real-time to ensure routes are being followed and students arrive safely on time
- Proactively react to traffic delays and weather conditions in real time
- Monitor potential hazardous speeding with posted speed limits

Empower Your Fleet Today: copilotpro.com

alk.com



Global Offices
USA, UK, France, Germany, India

ALK Technologies is a transportation technology company dedicated to defining the optimal route to success through innovative routing, mileage, mapping, and navigation solutions. © 2017 ALK Technologies Inc. · All Rights Reserved